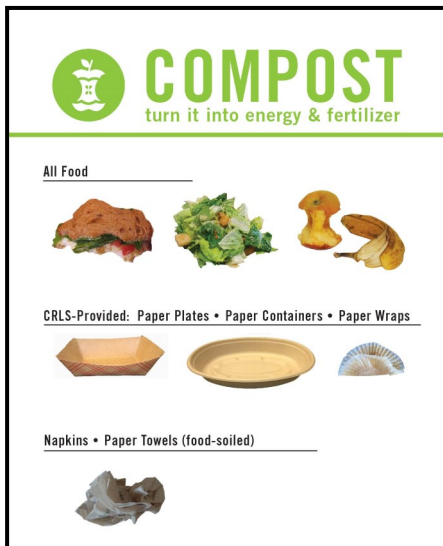


CRLS Composts & Recycles



- ◇ Glass Bottles & Jars
- ◇ Metal Cans & Foil/Foil Containers
- ◇ Plastic Containers
- ◇ Paper & Cardboard
- All containers must be empty
- No liquids, no food
- No compostable plastics
- No paper food containers



- ◇ All food, including bones
- ◇ Napkins, paper towels, tea bags, coffee filters/grounds
- ◇ Paper containers and wrap used to serve cafeteria food
- No liquids
- No plastic-coated paper plates, containers, cups
- No tissues



- These items can't be composted or recycled
- Let's reduce our trash!
- Trash is landfilled or incinerated and causes pollution
- Reduce trash by reducing consumption, re-using items, recycling and composting!